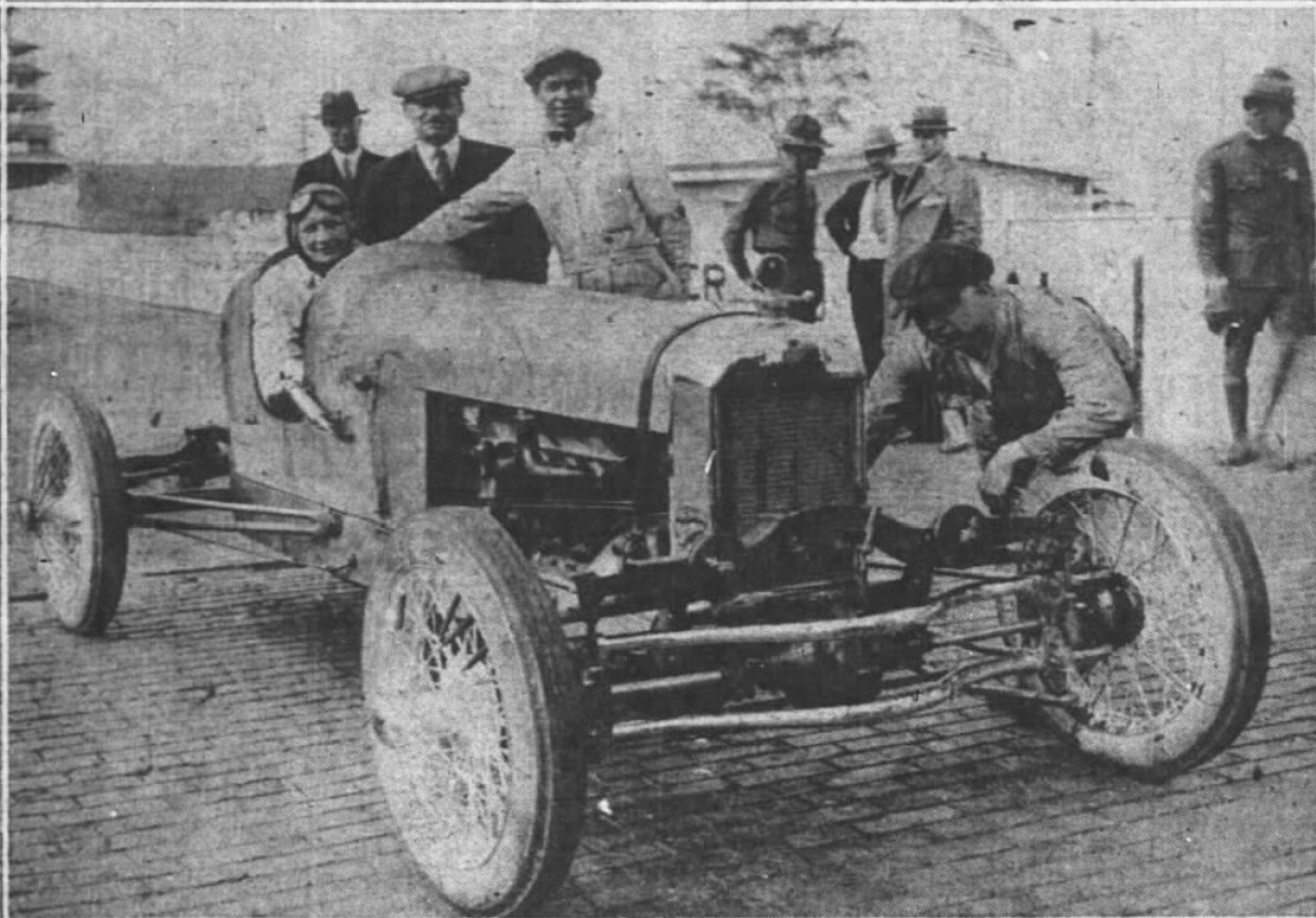


## Unique Creation—Indianapolis-Made



Seated in the car, Jack McCarver, the pilot for the 500-mile race. Grouped around car, left to right, Fred Hetherington, of the Hamlin Motor Car Company; Arthur Chevrolet; Olin Reeves, mechanic; Dutch Baumann, dirt track driver for Chevrolet.

The Hamlin Front Drive Special is the entry of the Hamlin Motor Company, of Chicago. It is one of the unique cars to be entered in the 500-mile race. But, because it is unique, don't let the reader get the idea that it is the bunk. It is one of the neatest Fronty-Ford creations ever seen in the 500-mile race.

To Indianapolis goes the credit for the car, in that it was designed and made in the shops of Chevrolet Brothers, in West Tenth street. The two Chevrolets, Louis and Arthur, have been racing and making racing cars ever since Heck was a very small pup. This year they appear to have developed the fastest thing in the near Ford class that they ever have made. Incidentally they built two winners of the 500-mile race—the 1920 Monroe Special and the 1923 Frontenac Special.

The present entry is unique in that it has a Fronty-Ford head and the complete power layout of the Ford car. In order to accomplish the front drive the Chevrolets merely took the Ford power plant from stem to stern and turned it around, the differential becoming the front drive mechanism, the fly wheel being immediately behind the front driving axles, the motor being directly behind the flywheel and the transmission being at the rear end of the motor. The two curved axles in front carry the weight of the front end and the driving axles are between them, as plainly shown in the picture.

The car is speeded up by the aid of a blower, or supercharger, so that, the Chevrolets say, the car will do 110 miles an hour on the straightaways.

It already has been tried out, being at the track Wednesday and driven slowly to work it in. Jack McCarver, test pilot for the Chevrolet racing cars, will drive the car in the race.

All in all, the car is a pretty job as to workmanship and it is only necessary to recall that the Chevrolet creations always run.