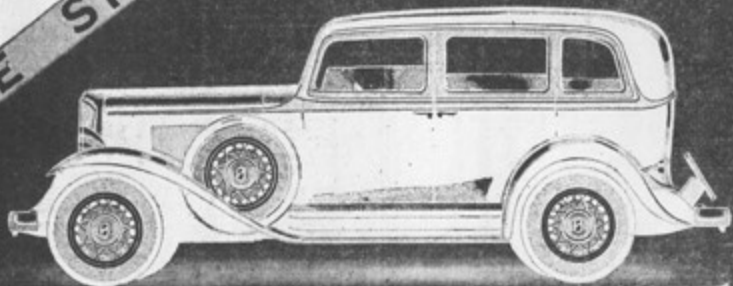


FIRST SHOWING OF THE

**NEW**

*Frontenac*  
"6-85"

*Companion Car  
to the  
Frontenac  
"6-70"*



THE SPOTLIGHT OF THE SHOW

STYLE LEADER OF THE MEDIUM PRICE FIELD



THE new Frontenac "6-85" is undoubtedly the "Spotlight of the Motor Show" . . . This is the first showing of this ultra-modern, new car! . . . The new Frontenac "6-85" is a triumph of modern coachcraft, reflecting the air-curve symmetry and beauty of custom-built bodies . . . at a popular price.

It is a strikingly new automobile achievement . . . it dares to be original . . . and boldly upsets all traditions of performance and value.

*"Priced for today . . . Built for tomorrow."*

**SPOTLIGHT FEATURES**

- Super Power Red Seal
- Continental Motor
- Constant Mesh Transmission
- Simplified Free Wheeling
- Automatic Starting
- Feather-touch Baking Control
- Self-adjusting Shock Absorbers
- Custom-built Bodies
- Quality Built Throughout

**SEE THE NEW FRONTENAC "6-85" AT THE MOTOR SHOW**

**DOMINION MOTORS LIMITED TORONTO (LEASIDE) CANADA**