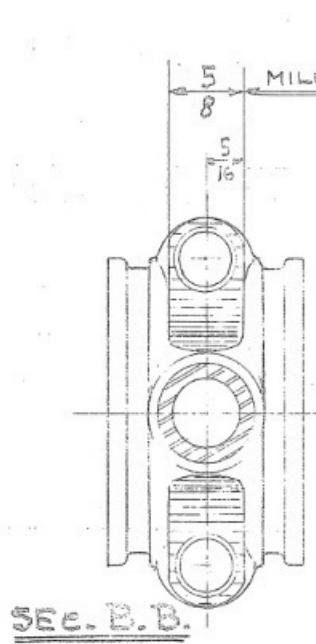


(BRINELL 260-280)

MATL. SAE. 6135. HEAT TREATMENT #VII
OR
SPECIAL FORD STEEL & FORD
HEAT TREATMENT



IF REAM $\frac{7}{16}$ DEEP & CTSK $90^\circ \times \frac{5}{8}$ DIA.
& DRILL $\frac{1}{2}$ DEEP AFTER BUSHING PRESSED
REMOVE BOSS AFTER MACHINED.

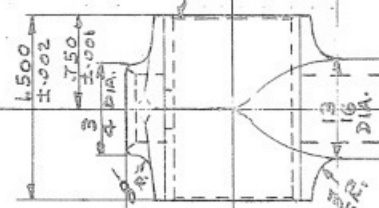
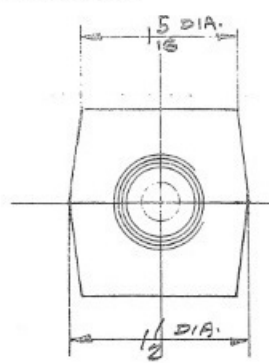
1.062
1.063 DIA. REAM &
PRESS BRONZE BUSHING
BURNISH TO .994-.995 DIA.
CHAMFER $\frac{1}{2} \times 45^\circ$

CTSK $90^\circ \times \frac{15}{32}$ DIA.
2 PLACES.

$\frac{7}{16}$ REAM 2.
WITH ROD.

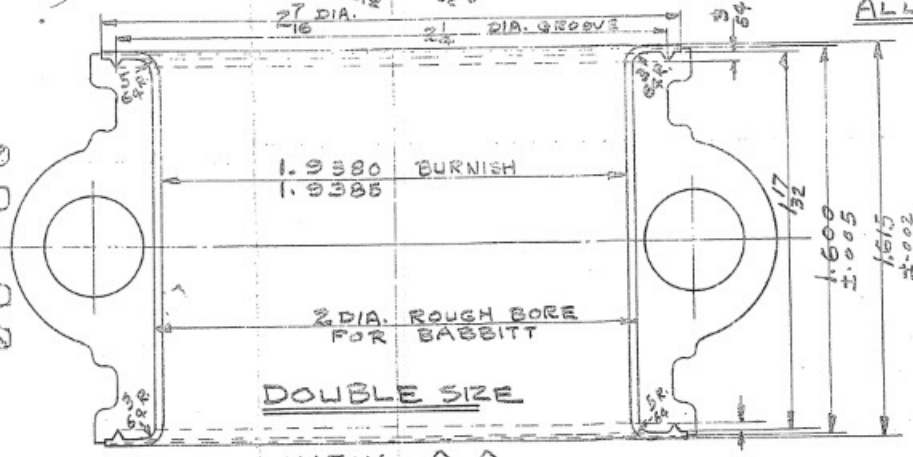
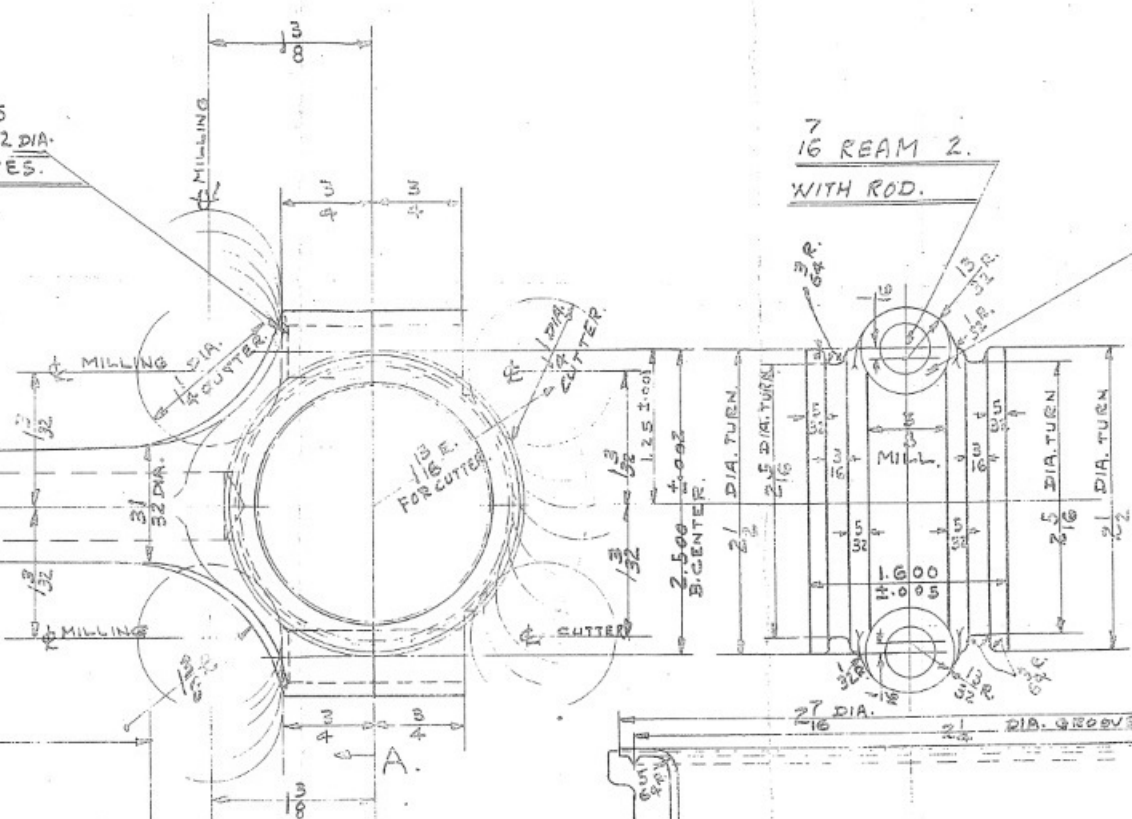
SPOT FACE
 $\frac{3}{4}$ DIA. 2 PLACES.

SMOOTH FINISH &
REMOVE TOOL-MARKS.
ALL OVER.



TAPER.

7.488
7.502



DOUBLE SIZE
VIEW A.A.

CONNECTING ROD
4-4.
SEE NOTE FULL
A-F-110