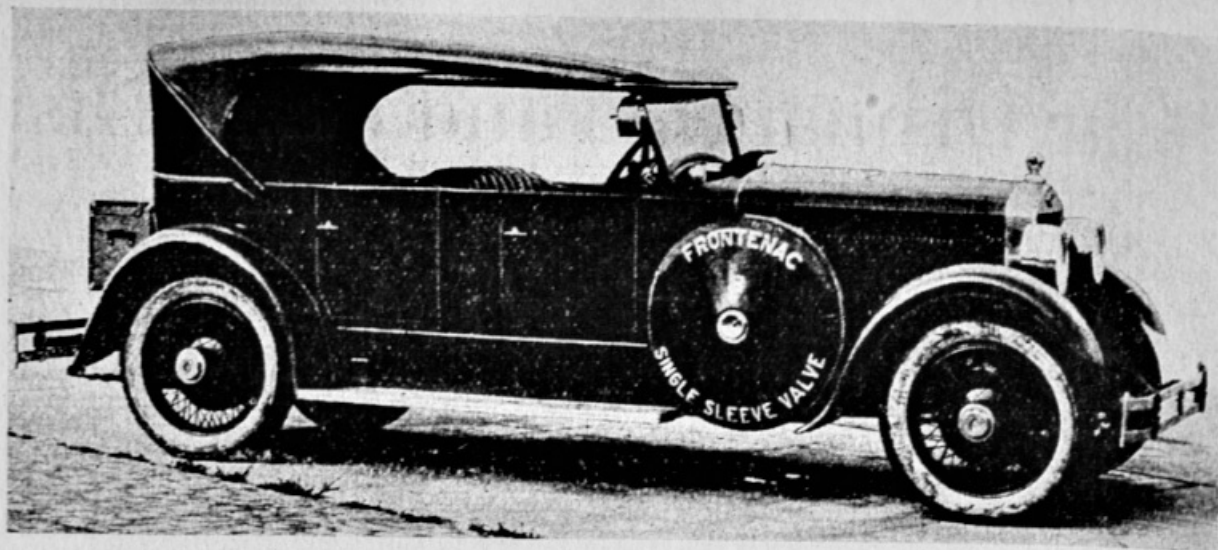


## New Frontenac Straight Eight Has Unusual Features

THE new Frontenac straight eight recently announced in Motor World uses a single sleeve valve Burt type engine 3 $\frac{3}{8}$  x 5 in., developing 80 hp. at 2600 r.p.m. The crankshaft is 2 $\frac{3}{8}$  in. in diameter supported in nine bearings. Lubrication is force feed, cooling thermosyphon and ignition starting and lighting is Delco of a special design. The wheelbase is 140 in., springs semi-elliptic and so designed that they are flat under load. The front springs are 40 x 2 in. and the rear 60 x 2 $\frac{1}{2}$  in. Phosphor bronze spring bushings are used.

An option of wire, wood or disk wheels is provided with 33 x 5 in. cord tires or balloon tires. Brakes are Lockheed hydraulic four-wheel type and the emergency brake is on the transmission.

The windshield is inclined in the open models and of the one-piece type fitted with rubber weather strip. On the closed



*The new Frontenac straight eight with Burt single sleeve valve engine. In addition to the phaeton there is a sedan-model mounted on the same chassis with 140-in. wheelbase*

models the windshield is of the two-piece type and is fitted with a sun visor. The instrument board is of enameled steel integral with the body, the instruments

being nickel faced and mounted flush and illuminated.

The weight of the open model is approximately 4600 lb.